

FFC/FPC Connector Selection Guide

GCT offer a range of Flat Flexible Cable (FFC) and Flat Printed Circuit (FPC) connectors in 0.30, 0.50 & 1.00mm pitches, horizontal and vertical orientation and numerous locking styles. All are Zero Insertion Force (ZIF) designs. Connectors accept FFC which GCT can also supply in 0.50 and 1.00mm pitches.

A wide range of special cable options are available, such as shielded, high temperature and folding/bending.



	FFC1B06	FFC2A32	FFC2A33	FFC2B16	FFC2B21	FFC2B27	FFC2B28	FFC2B29	FFC2B35	FFC2C05	FFC3A20	FFC3B07	FFC3B11
Pitch	0.30mm	0.50mm	0.50mm	0.50mm	0.50mm	0.50mm	0.50mm	0.50mm	0.50mm	0.50mm	1.00mm	1.00mm	1.00mm
PCB Mount Type	Horizontal -SMT	Vertical -SMT	Vertical -SMT	Horizontal -SMT	Horizontal -SMT	Horizontal -SMT	Horizontal -SMT	Horizontal -SMT	Horizontal -SMT	Horizontal -SMT	Vertical -SMT	Horizontal -SMT	Horizontal -SMT
Actuator Type	Front Flip Lock	Slide Locking	Slide Locking	Slide Locking	Slide Locking	Back Flip Lock	Back Flip Lock	Back Flip Lock	Front Flip Lock	Back Flip Lock	Slide Locking	Slide Locking	Slide Locking
Cable Entry Type	Side Entry	Top Entry	Top Entry	Side Entry	Side Entry	Side Entry	Side Entry	Side Entry	Side Entry	Side Entry	Top Entry	Side Entry	Side Entry
Cable Contact Type	Bottom Contact	X	X	Top Contact	Bottom Contact	Dual Contact	Dual Contact	Dual Contact	Bottom Contact	Dual Contact	X	Bottom Contact	Top Contact
Profile	1.00mm	4.25mm	4.50mm	2.00mm	2.00mm	2.00mm	1.00mm	2.60mm	2.00mm	2.24mm	5.50mm	2.50mm	2.50mm
Plating Std	Gold Flash	TIN	TIN	TIN	TIN	Gold Flash	Gold Flash	Gold Flash	Gold Flash	Gold Flash	Gold Flash	TIN	TIN
Plating Optional	TIN	Gold Flash	Gold Flash	Gold Flash	Gold Flash	N/A	N/A	N/A	TIN	N/A	TIN	Gold Flash	Gold Flash
No. of Contacts	13-51	4-60	4-40	4-40	4-40	4-40	4-40	4-60	4-60	4-68	4-30	4-40	4-40
Current Rating	0.2A	0.5A	0.2A	0.4A	0.4A	0.4A	0.4A	0.4A	0.5A ^(40 Contacts) 0.4A ^(60 Contacts)	0.4A	1.0A	0.4A	0.4A

FFC Cable Selection Guide

GCT offers a comprehensive range of 0.50mm and 1.0mm Flat Flexible Cables available in standard lengths from 30mm thru to 304mm across a variety of conductor counts. Ideal for applications including LED screens, medical devices, test and measurement, computing devices and peripherals, industrial, consumer products, navigation and EPOS systems, these cables are offered in same side and opposite side contact options.

The cables feature flame retardent white polyester insulation around a tinned copper conductor and benefit from blue polyester supporting tape at the conductor ends. Additionally the UL20706 rating is marked on the cable insulation thus confirming the -40 to +105 °C operating temperature capability.



0.5mm FFC Cables			0.5mm pitch SMT FFC Connectors		
Available in 04 thru 50 conductor widths			Vert - Slide Lock	Horz - B/ Flip Lock (Dual Contact)	Horz - F/Flip Lock (Bottom Contact)
Cable Length (mm)	Contact Configuration		FFC2A32 (positions)	FFC2B28 (positions)	FFC2B35 (positions)
0030	Same (A)	Opposite (D)	04 - 60	04 - 40	04 - 60
0050	Same (A)	Opposite (D)	04 - 60	04 - 40	04 - 60
0076	Same (A)	Opposite (D)	04 - 60	04 - 40	04 - 60
0101	Same (A)	Opposite (D)	04 - 60	04 - 40	04 - 60
0127	Same (A)	Opposite (D)	04 - 60	04 - 40	04 - 60
0152	Same (A)	Opposite (D)	04 - 60	04 - 40	04 - 60
0177	Same (A)	Opposite (D)	04 - 60	04 - 40	04 - 60
0203	Same (A)	Opposite (D)	04 - 60	04 - 40	04 - 60
0228	Same (A)	Opposite (D)	04 - 60	04 - 40	04 - 60
0254	Same (A)	Opposite (D)	04 - 60	04 - 40	04 - 60
0279	Same (A)	Opposite (D)	04 - 60	04 - 40	04 - 60
0304	Same (A)	Opposite (D)	04 - 60	04 - 40	04 - 60

1.0mm FFC Cables			1.0mm pitch SMT FFC Connectors		
Available in 04 thru 40 conductor widths			Vert - Slide Lock	Horz -Slide Lock (Bottom Contact)	Horz -Slide Lock (Top Contact)
Cable Length (mm)	Contact Configuration		FFC3A20 (positions)	FFC3B07 (positions)	FFC3B11 (positions)
0030	Same (A)	Opposite (D)	04 - 30	04 - 40	04 - 40
0050	Same (A)	Opposite (D)	04 - 30	04 - 40	04 - 40
0076	Same (A)	Opposite (D)	04 - 30	04 - 40	04 - 40
0101	Same (A)	Opposite (D)	04 - 30	04 - 40	04 - 40
0127	Same (A)	Opposite (D)	04 - 30	04 - 40	04 - 40
0152	Same (A)	Opposite (D)	04 - 30	04 - 40	04 - 40
0177	Same (A)	Opposite (D)	04 - 30	04 - 40	04 - 40
0203	Same (A)	Opposite (D)	04 - 30	04 - 40	04 - 40
0228	Same (A)	Opposite (D)	04 - 30	04 - 40	04 - 40
0254	Same (A)	Opposite (D)	04 - 30	04 - 40	04 - 40
0279	Same (A)	Opposite (D)	04 - 30	04 - 40	04 - 40
0304	Same (A)	Opposite (D)	04 - 30	04 - 40	04 - 40

Example : 0.5mm pitch, 10 way, 254mm length cable with same side conductors and mating connector options

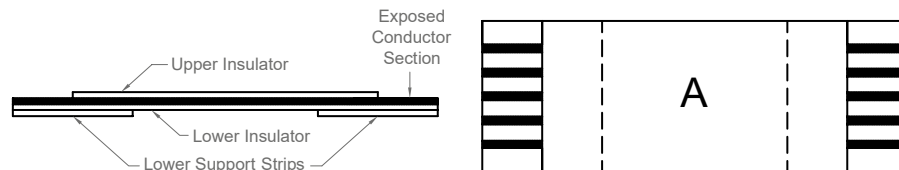
Cable p/n : 05-10-A-0254-A-4-06-4-T FFC2A32-10-T FFC2B28-10-G FFC2B35-10-T

Example : 1.0mm pitch, 8 way, 76mm length cable with opposite side conductors and mating connector options

Cable p/n : 10-08-D-0076-C-4-08-4-T FFC3A20-08-G FFC3B07-08-T FFC3B11-08-T

Note: Customers should always refer to the connector product drawings to ensure that the specific variant is tooled and available.

Cable Type A - Conductor Same Side



Cable Type D - Conductor Opposite Side

